

COPYCAT

Billie Eilish

Zakura

$\text{♩} = 127$

Mm - m - m - m - m - m

mf

Detailed description: This block contains the first four measures of the piano accompaniment for 'Copycat'. The music is in 4/4 time. The right hand has rests in measures 1 and 3, and a melodic line in measures 2 and 4. The left hand plays a consistent eighth-note bass line. The dynamic marking *mf* is placed below the first measure.

5

Don't be cautious Don't be kind You committed I'm your cri - me

Detailed description: This block contains measures 5 through 8. The right hand has a vocal line with lyrics. The left hand continues the eighth-note bass line. Measure 8 ends with a double bar line.

9

Slower

Push my but-ton An - y - time You got your fin - ger on the trig - ger but your

Detailed description: This block contains measures 9 through 11. The tempo marking *Slower* is placed above the first measure of this block. The right hand has a vocal line with lyrics. The left hand continues the eighth-note bass line. Measure 11 ends with a double bar line.

12

Original Tempo

trig - ger fing - er's mi - ne Silv - er dol - lar

Detailed description: This block contains measures 12 through 14. The tempo marking *Original Tempo* is placed above the first measure of this block. The right hand has a vocal line with lyrics. The left hand continues the eighth-note bass line. Measure 14 ends with a double bar line.

16

Golden flame Dirt-y wat-er Pois - on r-a-in Perfect murder

20

Original Tempo

Take your aim I don't be long to an - y-one but ev-ery bod - y knows my name By the

rit. -----

ff

24

way You've been un - in - vi - i - t - ed 'Cause all you say

29

Are all the same things I - I - I did Cop - y - cat try-na cop my man - ner

33

Watch your back when you can't watch mine Cop - y - cat tryna cop my glam - our

37

Original Tempo

Why so sad bun-ny? Can't have mine?

rit.

f

41

Call me call oused Call me cold You're *i-tal-ic* I'm in bo - ld

45

Slower

Call me cock-y Watch your tone you bet-ter love me 'cause you're just a clo -

49

Original Tempo

ne By the way You've been un-in - vi-i-t-ed 'Cause all you

ff

54

say Are all the same things I - I-I did Cop - y - cat tryna cop my man - ner

59

Watch your back when you can't watch mine Cop - y - cat try na cop my glam - our

63

Slower

Original Tempo

Why so sad bun ny? Can't have mi - i - i - i - ne? Mi - i - i - n-

67

ne? I would hate to see you go Hate to be the

71

one that told you so You just crossed the line You've run out of

75

time I'm so sor - ry now you know Sor-ry I'm the

79

one that told you so Sor-ry Sor-ry I'm so

83

sor-ry sor-ry Sike! By the way You've been

ff

88

un-in - vi-i-t-ed 'Cause all you say Are all the same things I - I-I did

93

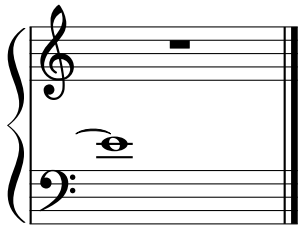
Cop - y - cat try-na cop my man - ner Watch your back can't watch mine

97

Cop - y - cat tryna cop my glam - our Why so sad bunny? Can't have mine?

rit.

Ad.



(*And.*) _____